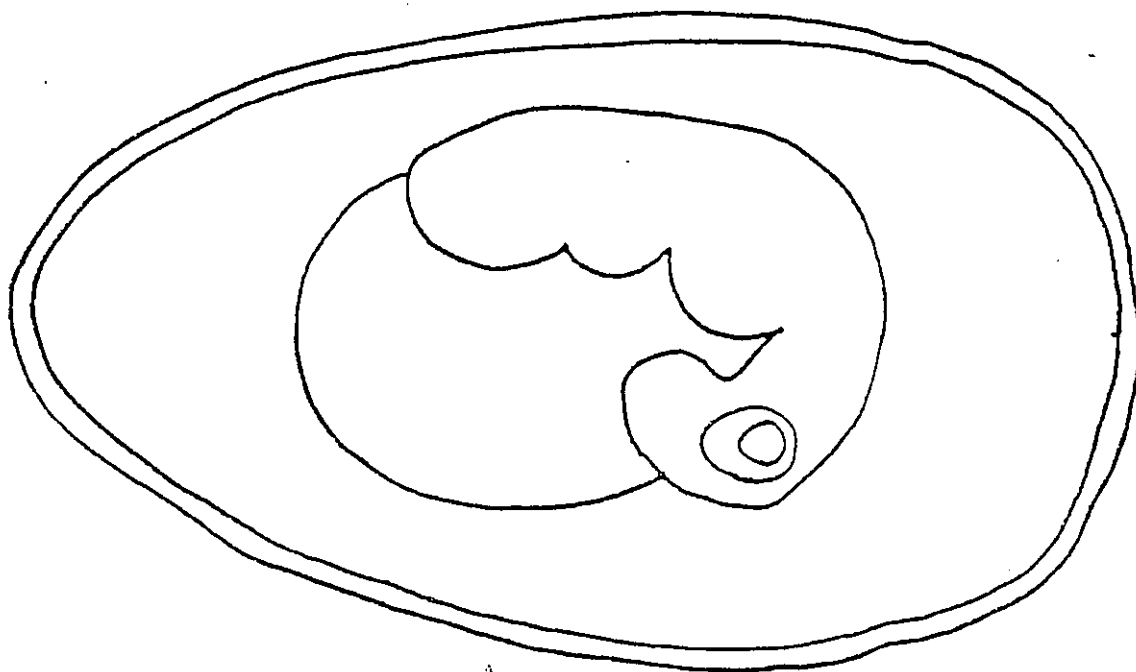


From Egg to Chick

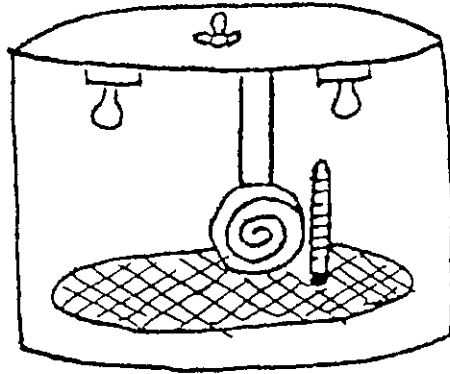
After _____ days it looks like this.



This is an _____.

It is used to hatch eggs to chicks.

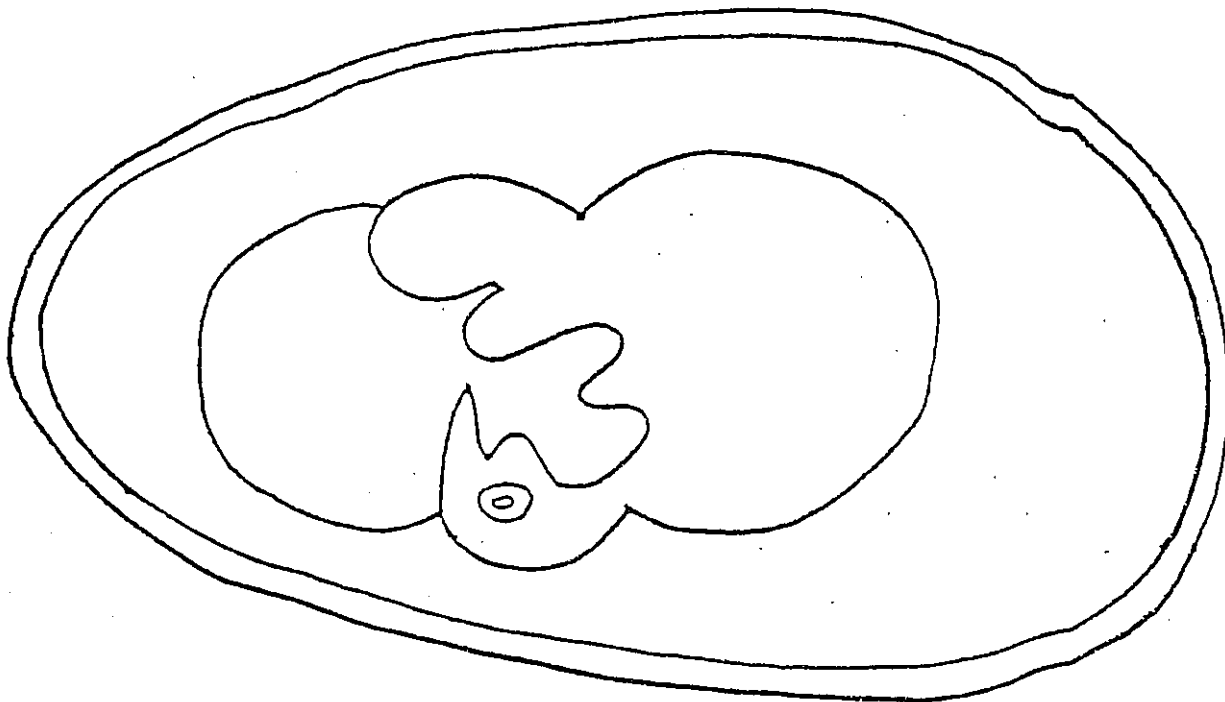
It will keep the eggs warm.



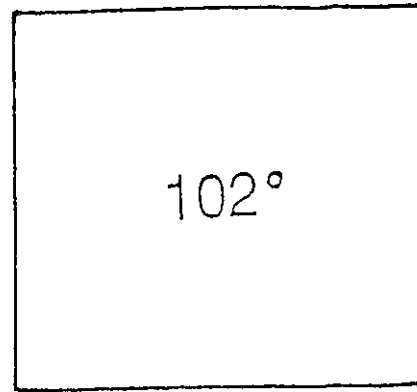
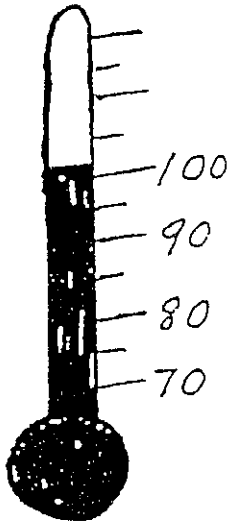
After _____ days it looks like this.

Has the beak formed? _____

Color the eye black and the yolk yellow.

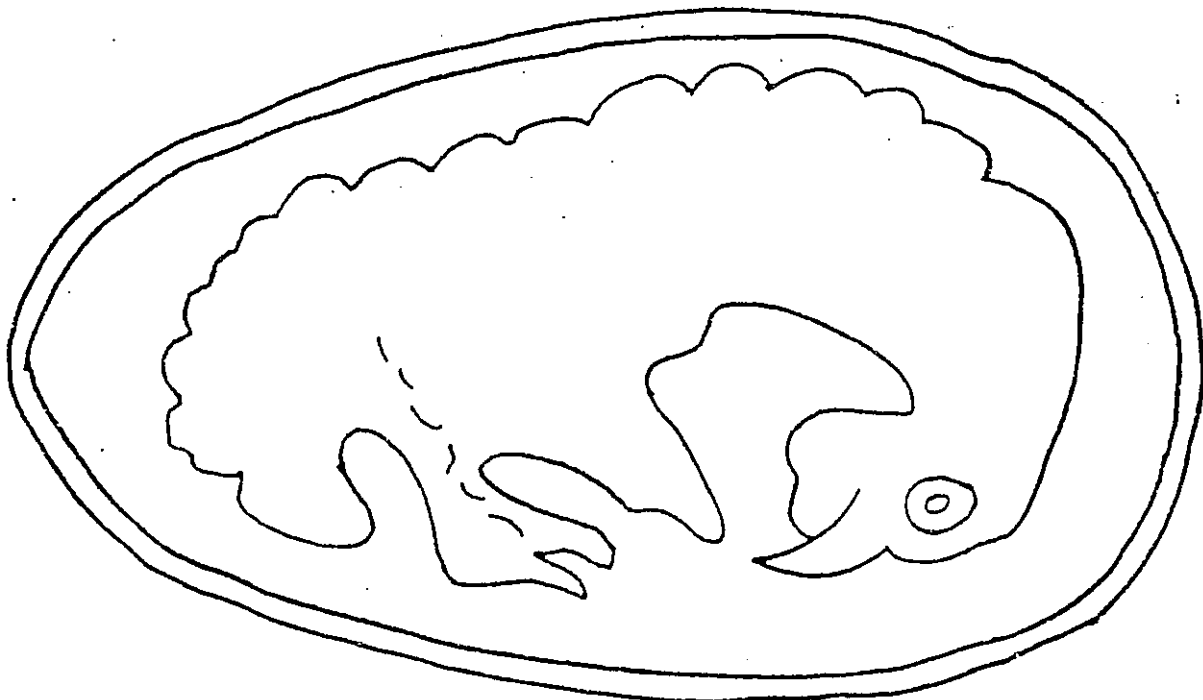


The thermometer must always be at _____ to keep the eggs warm.



2

After _____ days it looks like this.
It is getting bigger and bigger.



Sun

Mon

Tues

Wed

Thurs

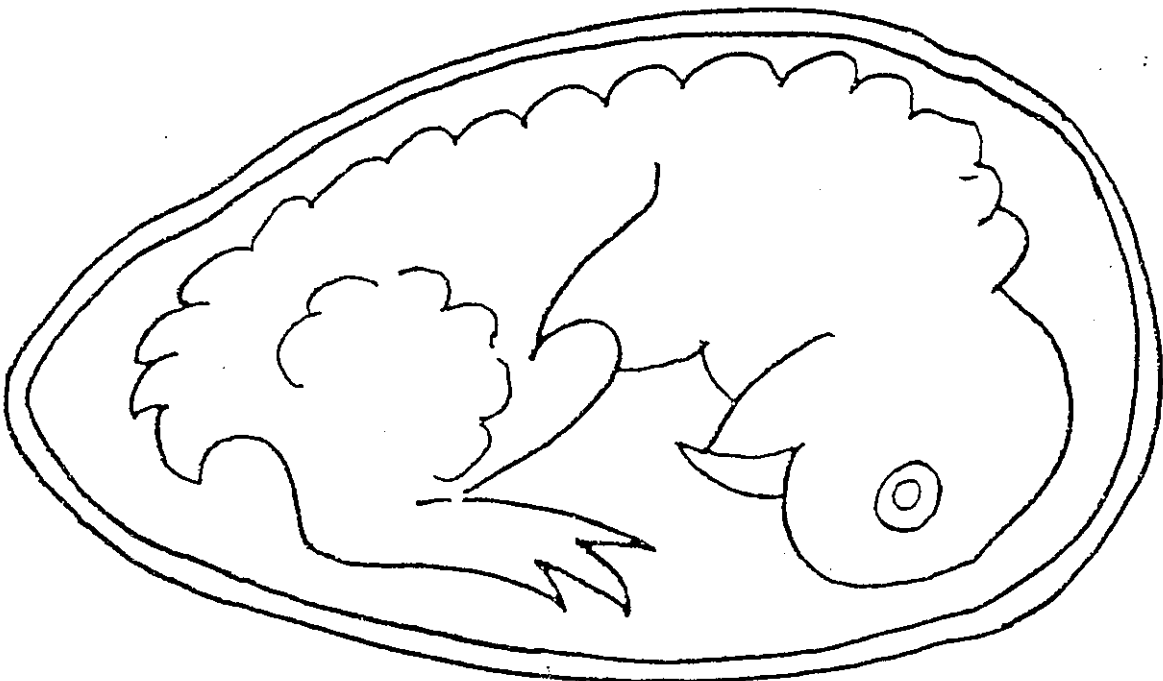
Fri

Sat

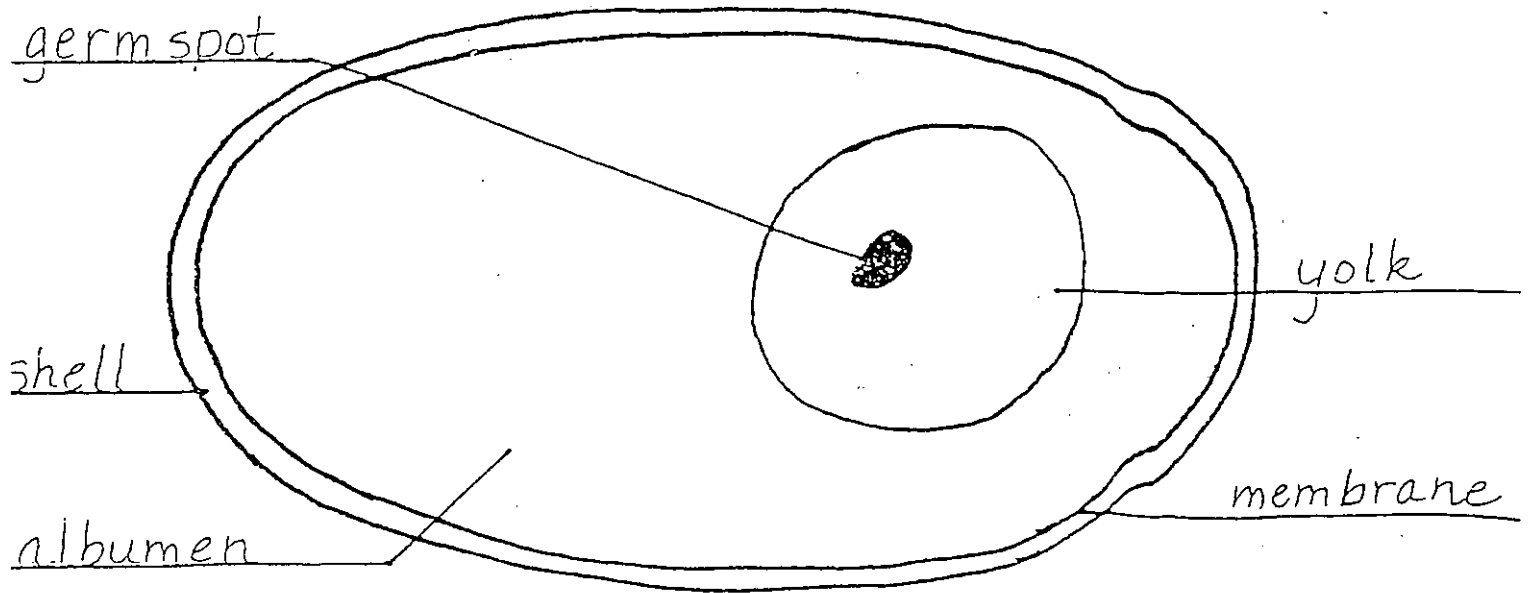
It takes _____ days to hatch a chick.

3

After _____ days it looks like this.



The chick grows inside the shell.



4

The chick eats the yolk for food. As it grows, it eats the white part (albumen) of the egg.

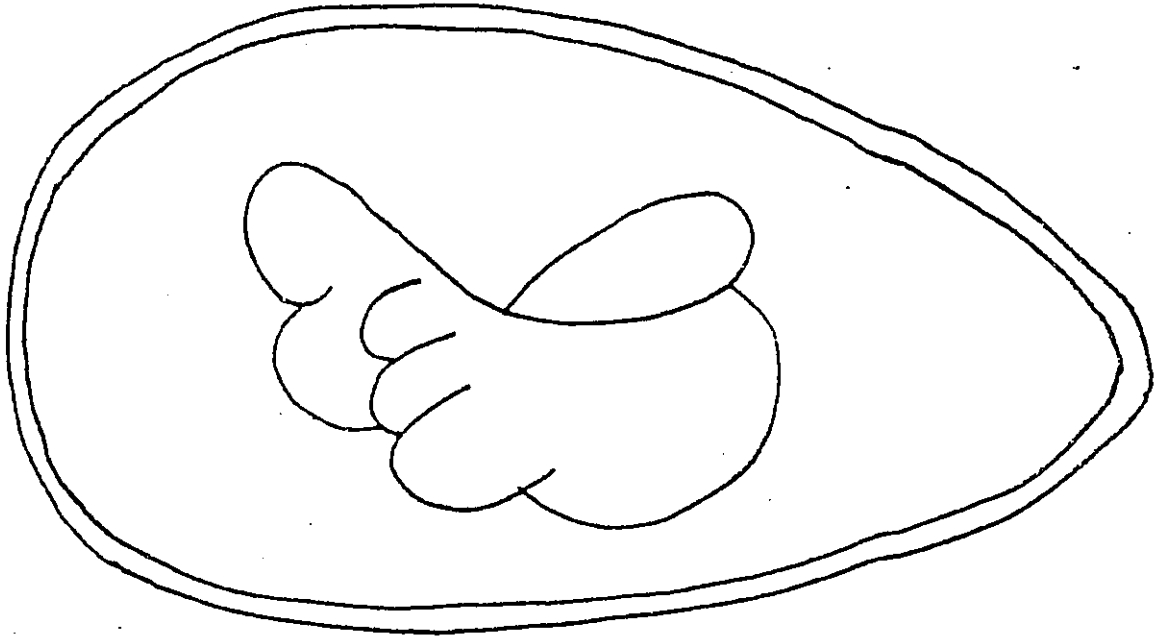


Here is the chick inside the egg on the _____ day.

After 3 days the egg looks like this inside.

The embryo eats the yolk for its food. The heart is beating.

The germ spot has already become a living embryo.



5

After _____ days the chick begins to hatch.

